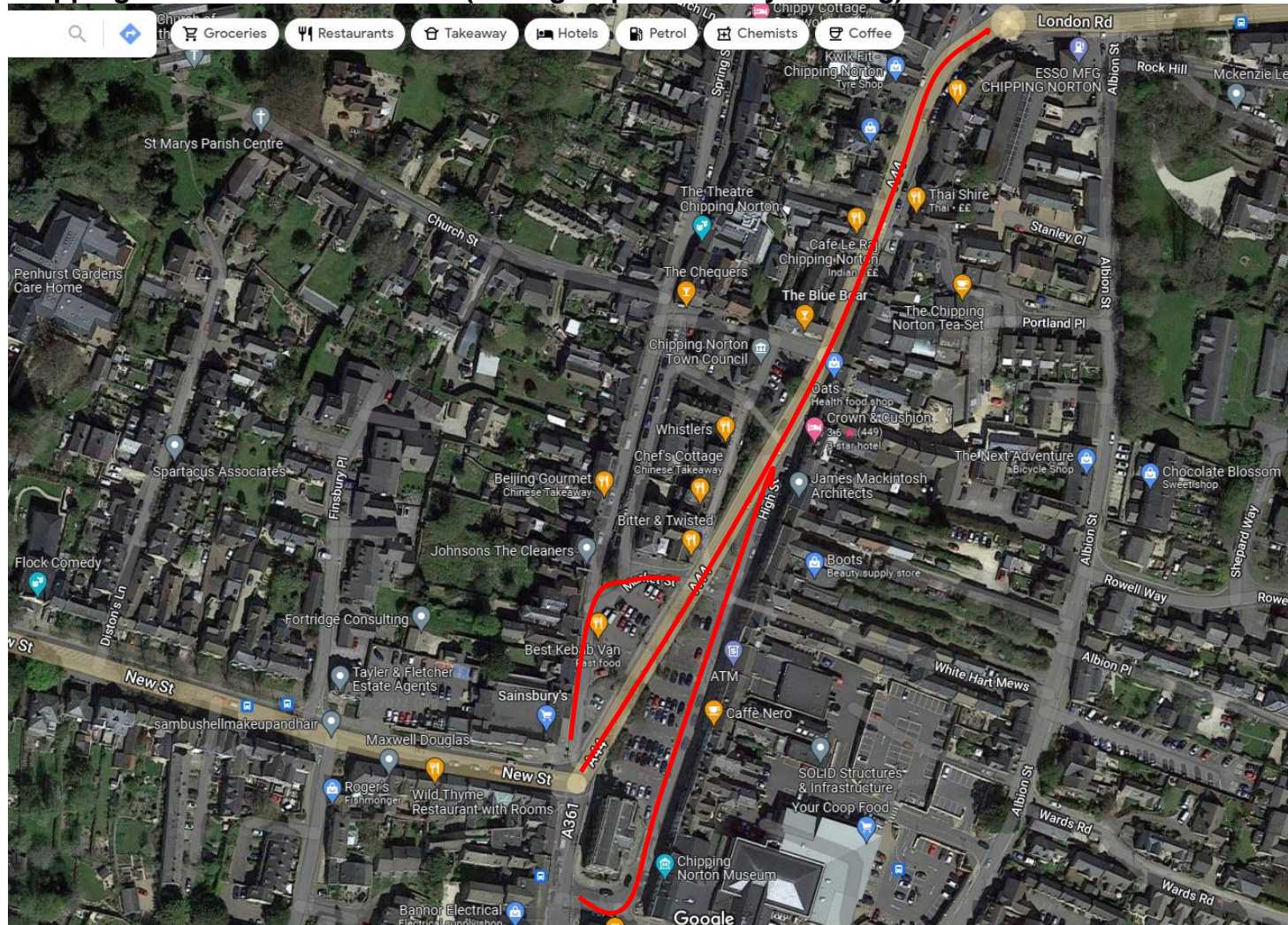
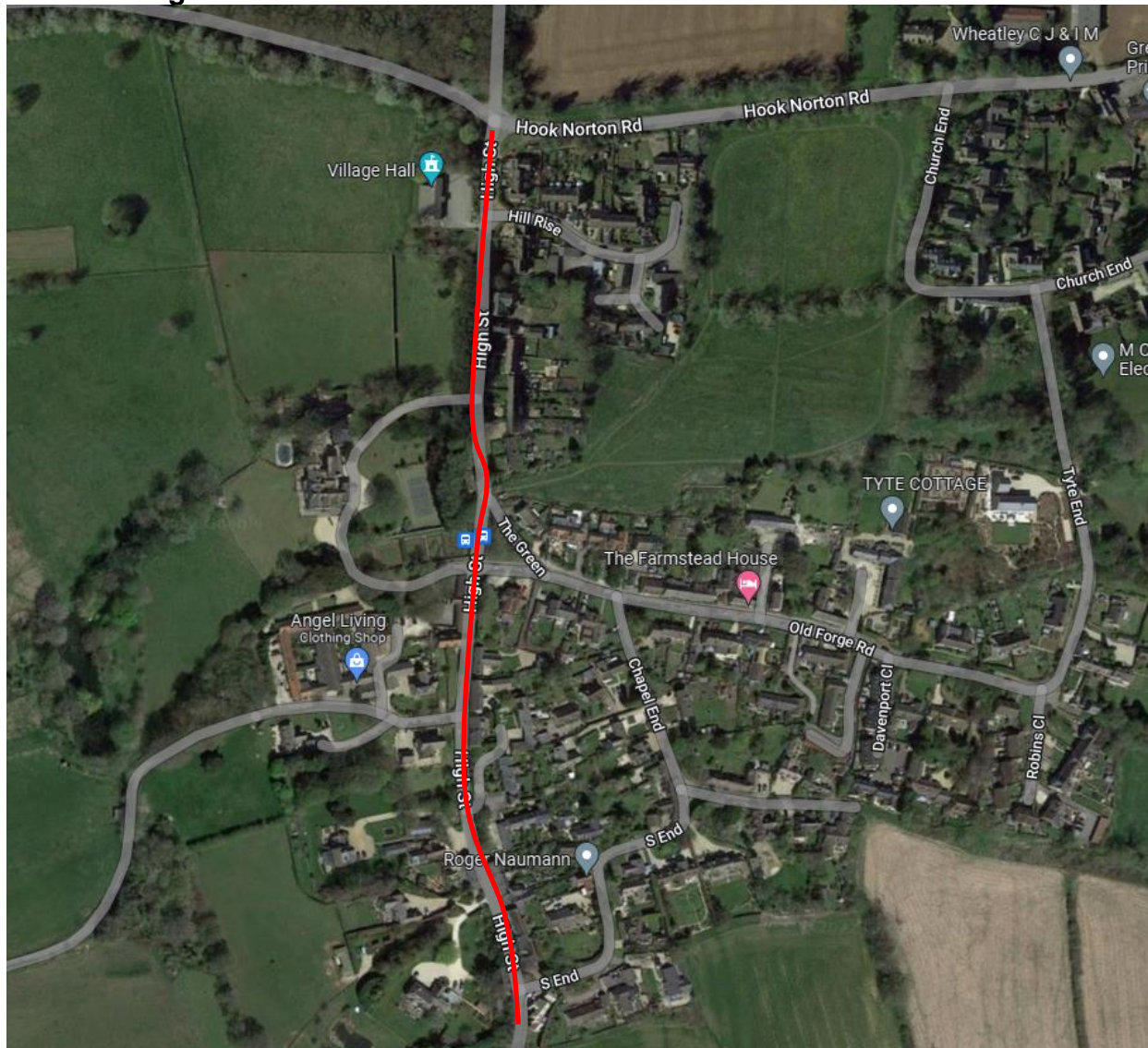


Women's Tour Oxfordshire 11th June 2022 'no waiting cones' extent in red on maps below.

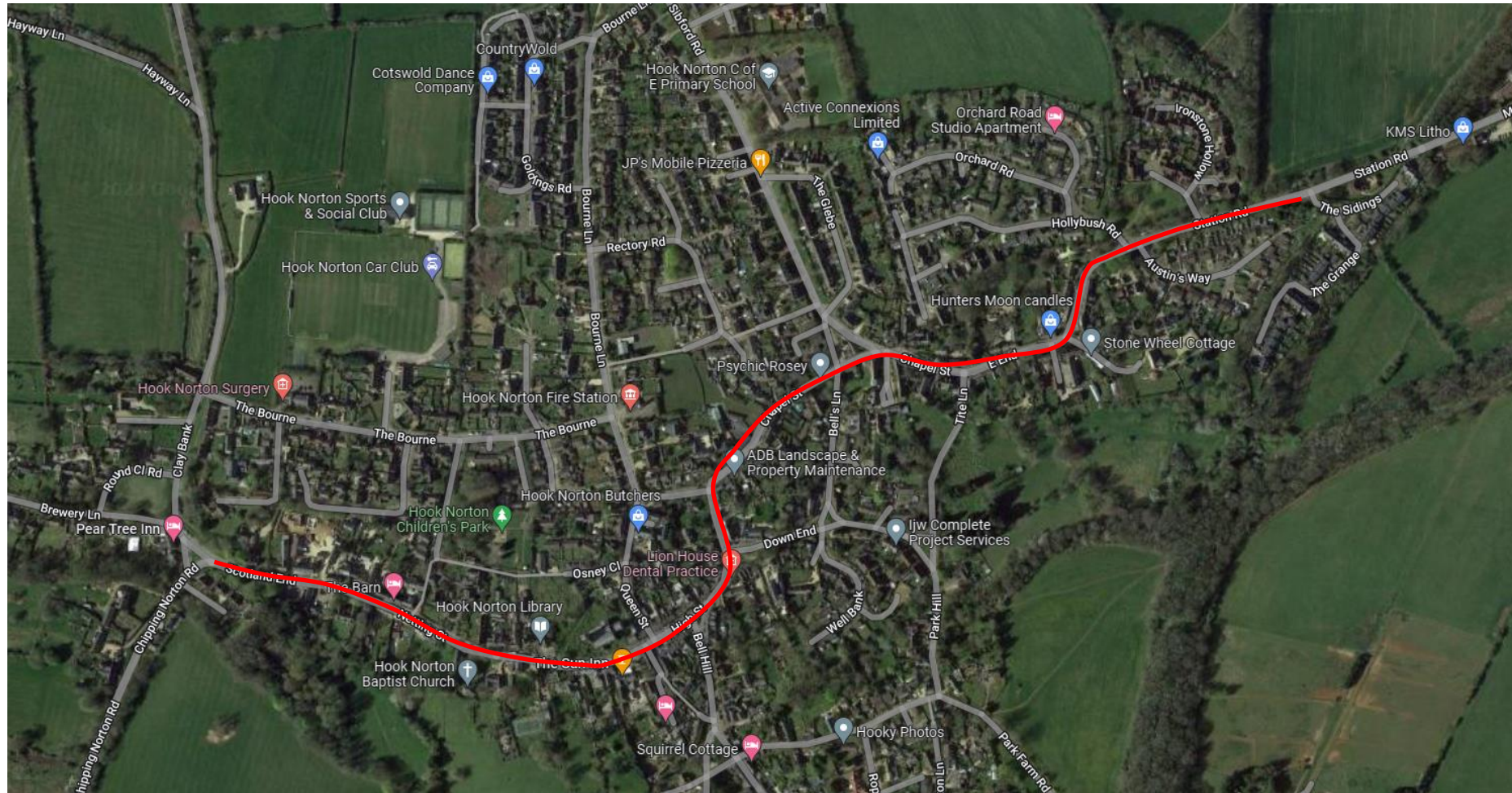
Chipping Norton race start area – (coning required Friday evening):



Great Rollright:



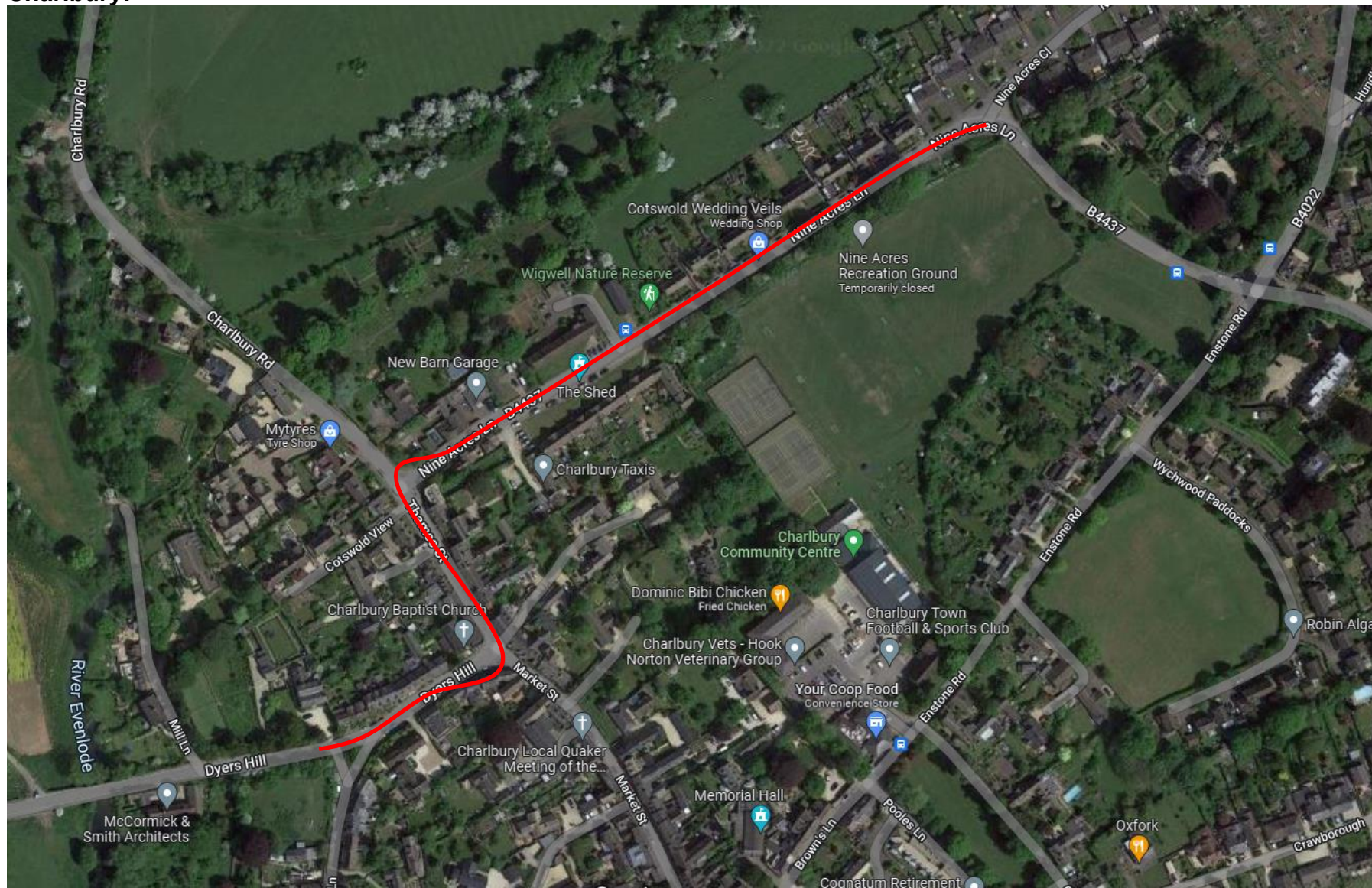
Hook Norton:



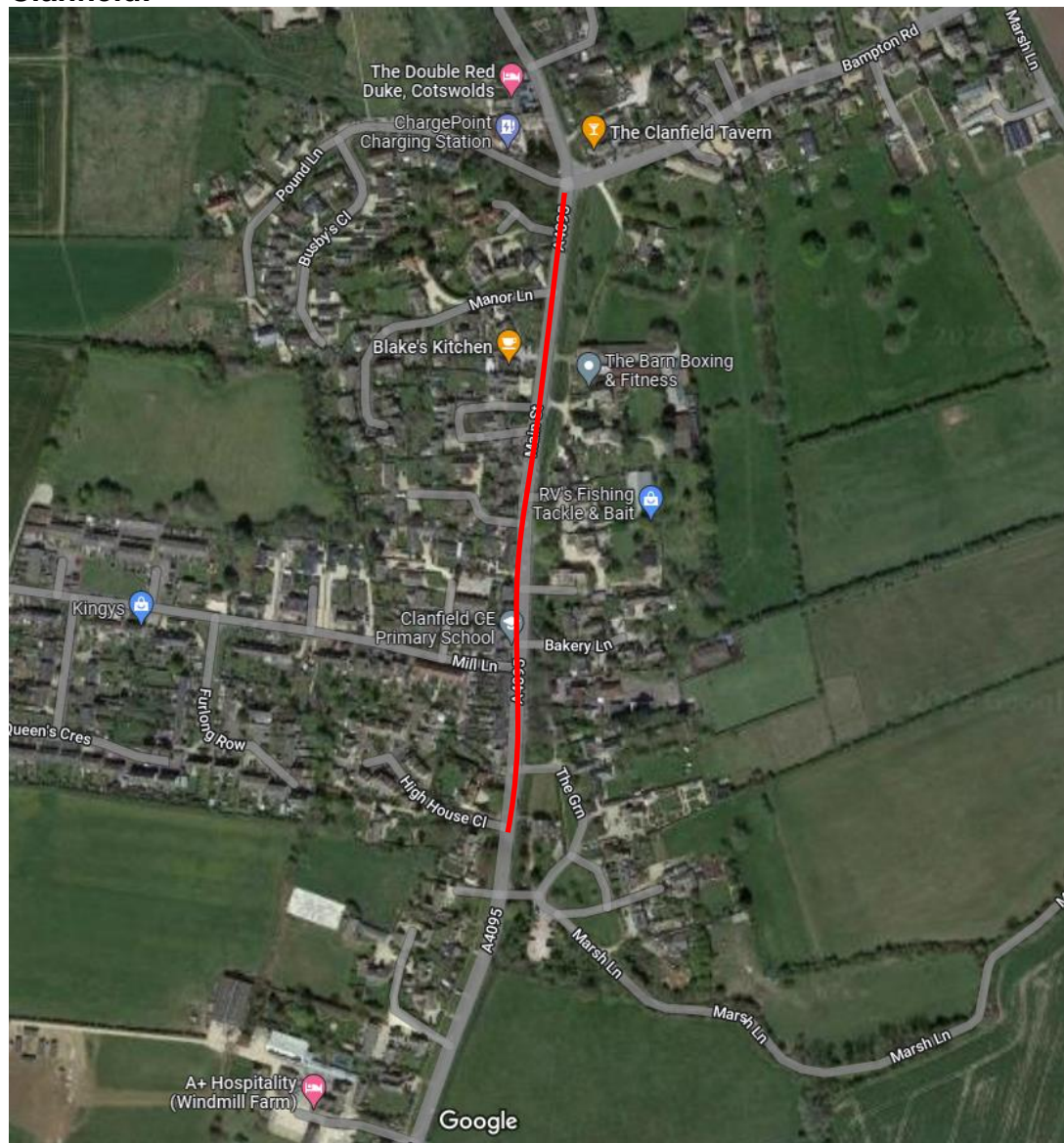
Millcome:



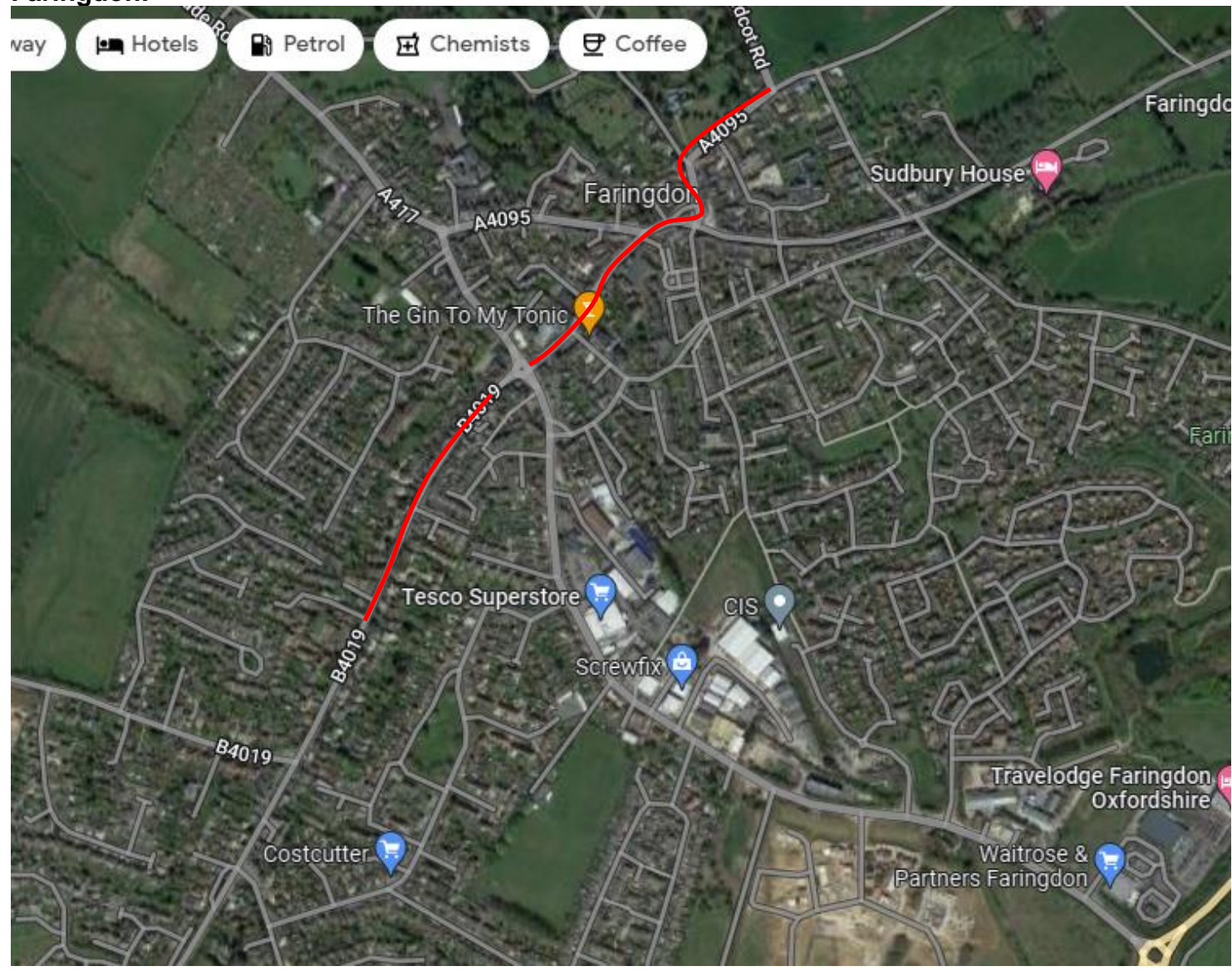
Charlbury:



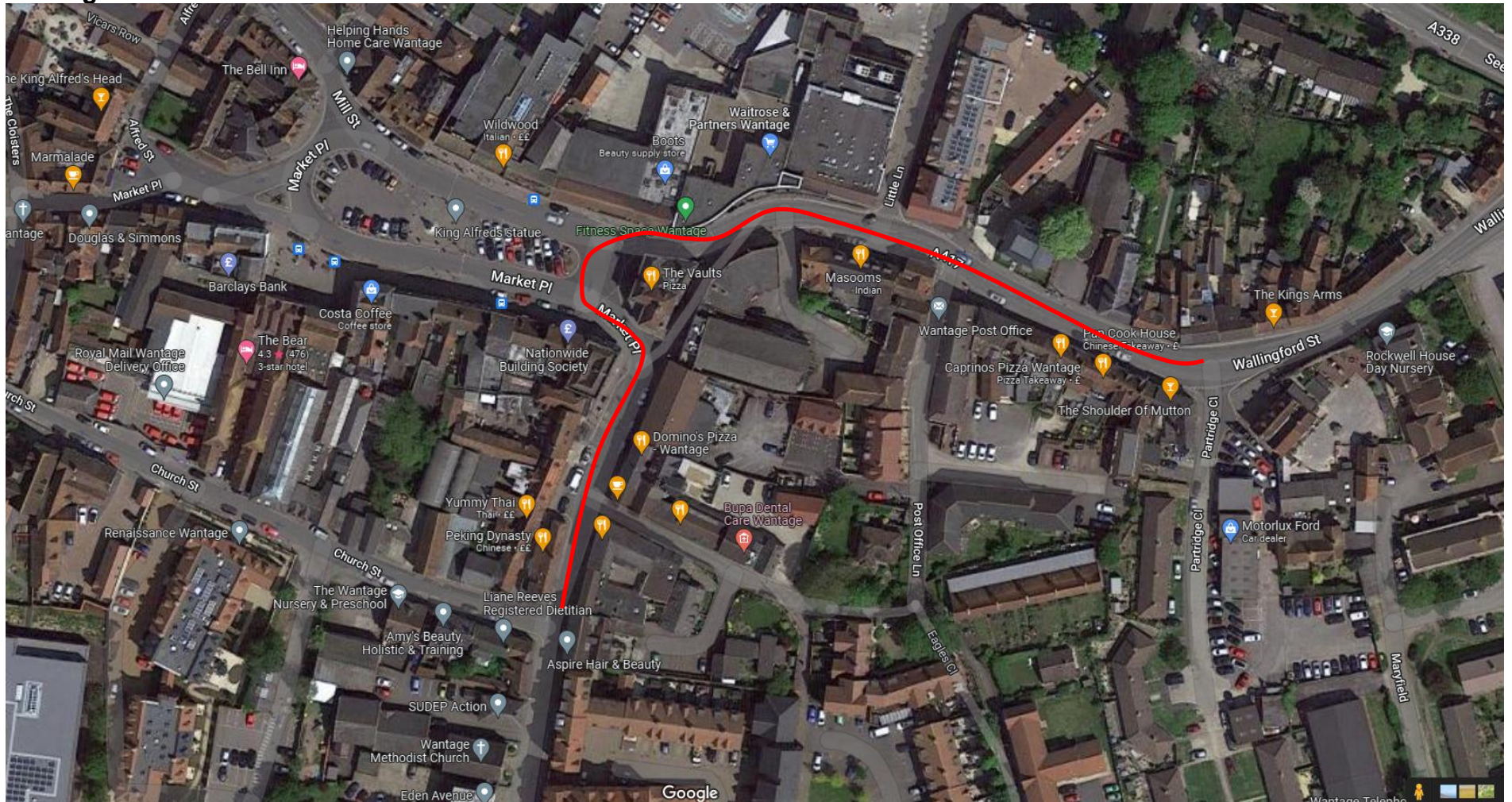
Clanfield:



Faringdon:



Wantage:



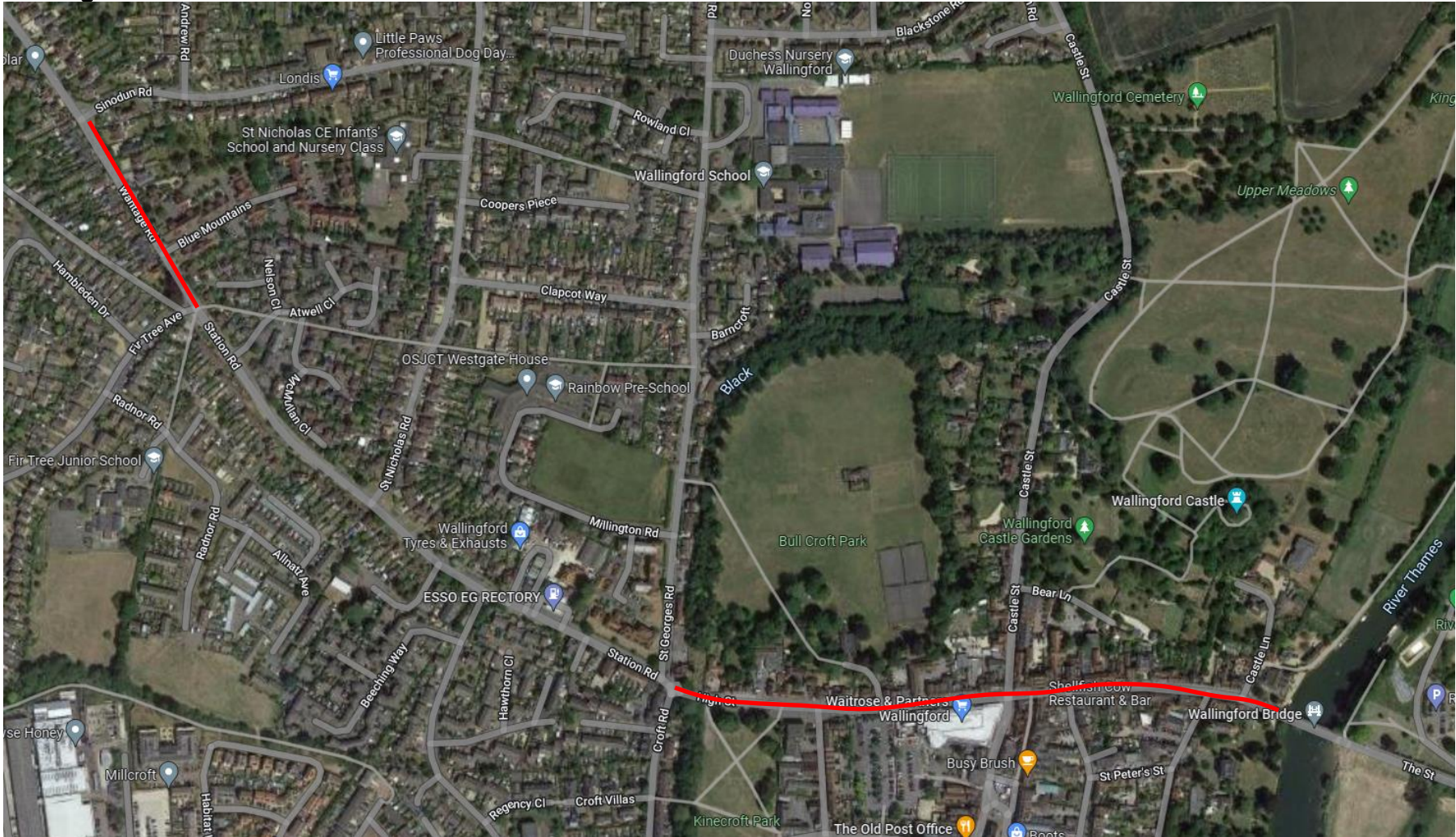
Harwell:



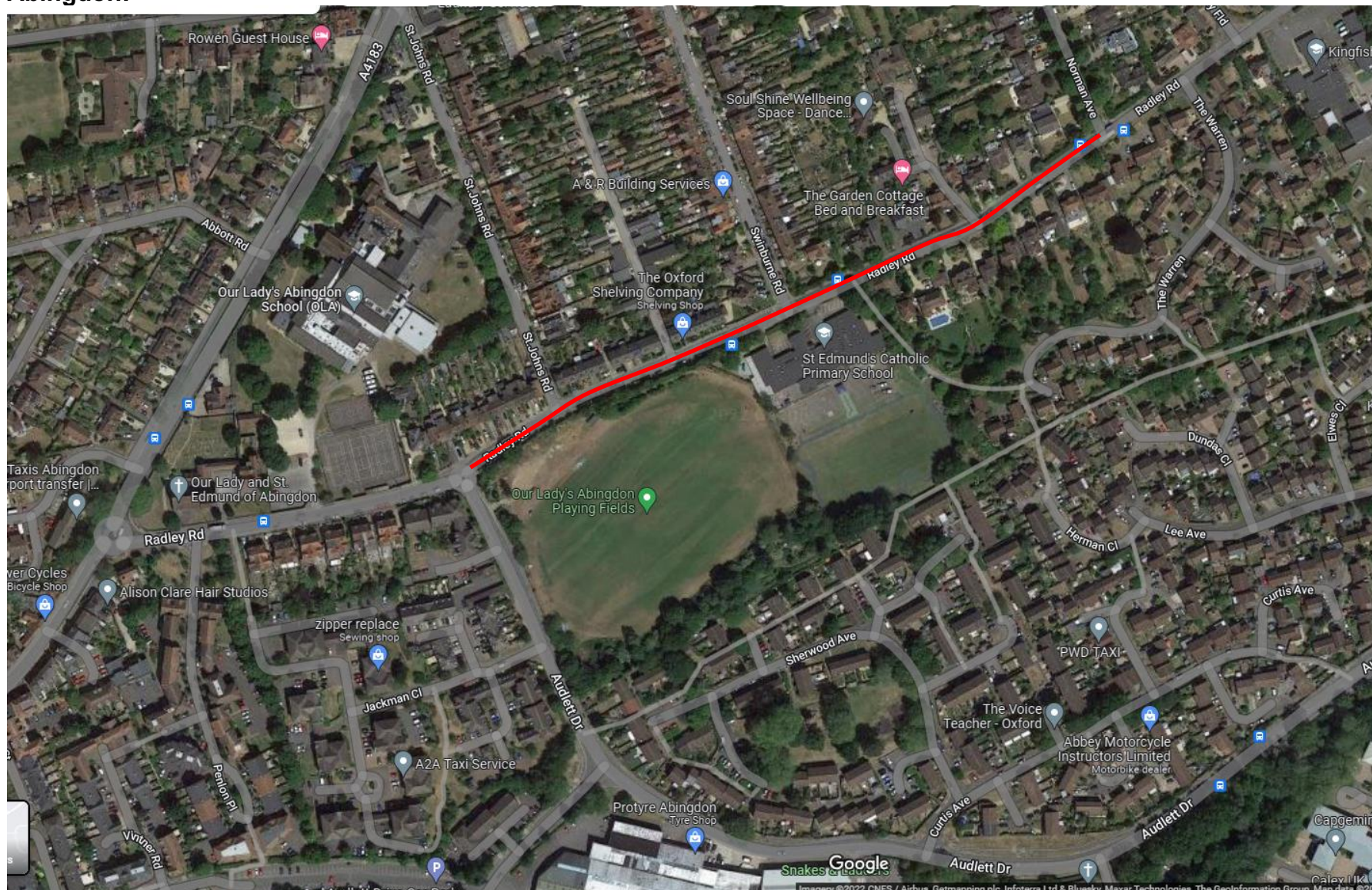
Didcot:



Wallingford:



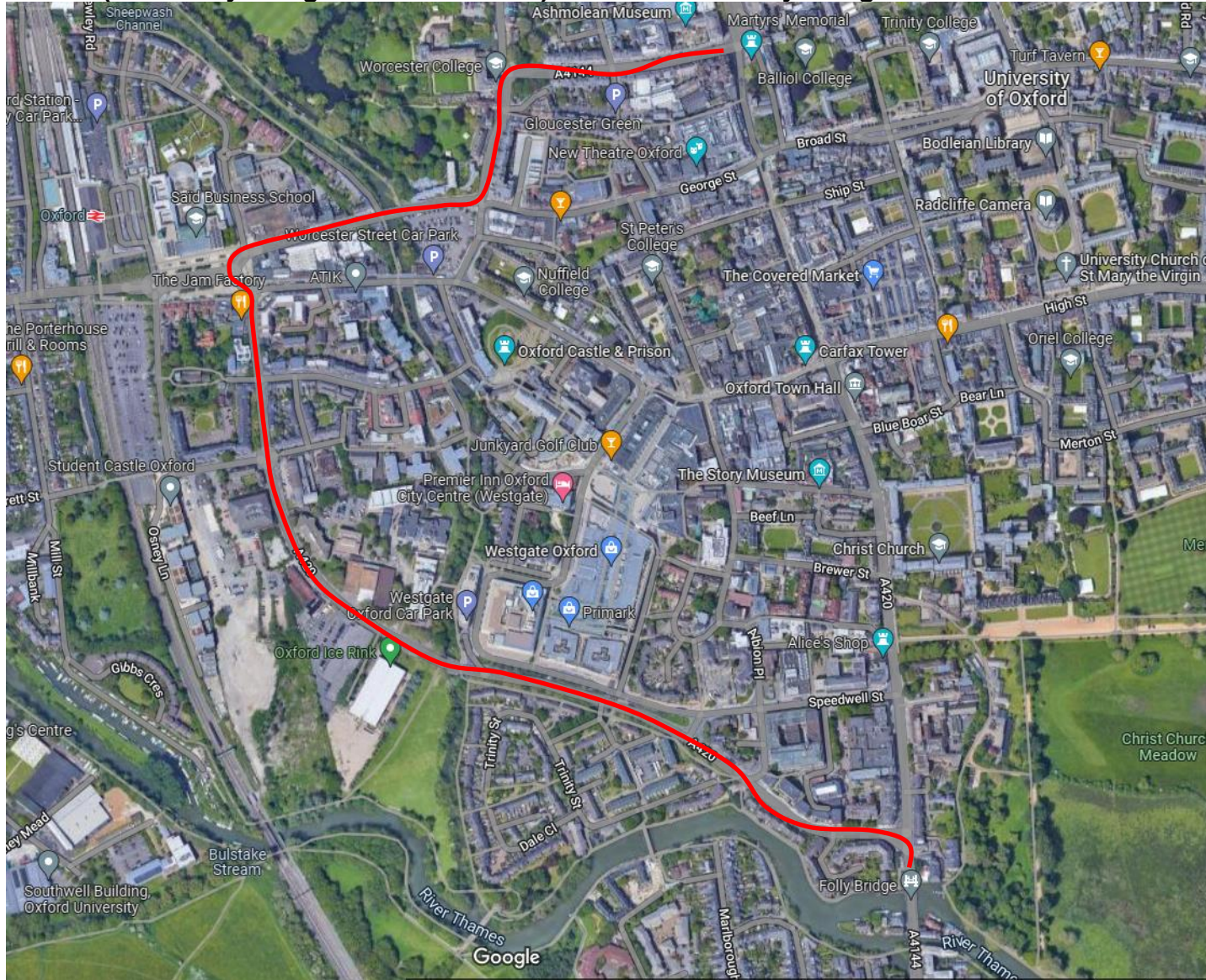
Abingdon:



Oxford (Abingdon Rd from Weirs Lane to Folly Bridge). No cones on Folly Bridge as too narrow:



Oxford (from Folly Bridge to Beaumont St). No cones on Folly Bridge as too narrow:



Oxford race finish area – St Giles. Ensure access to P&D parking bays are coned off both sides).

